



Solutions for your  
**Healthcare** needs



For a Better Life

**PRODUCT  
CATALOGUE**



## Efficacy

All our products should be effective in delivering the solutions they were manufactured for. We work tirelessly to ensure all our products provide a seamless user experience.

“AME brand is synonymous with premium customer service.”

- Dr. M. Tayyab Mustafa, CEO



Customer Service



Reliability



User Satisfaction

## Reliability

We use the highest quality of Raw Materials procured from the best suppliers. These are processed in **state of the art** manufacturing sites with staff with decades of experience ensuring that our products are reliable. The product should work consistently over time without breakdowns.

AME has a well established track record that ensures reliable and trusted services for our customers. We build our relationships based on guaranteed quality and dedication to customer service.

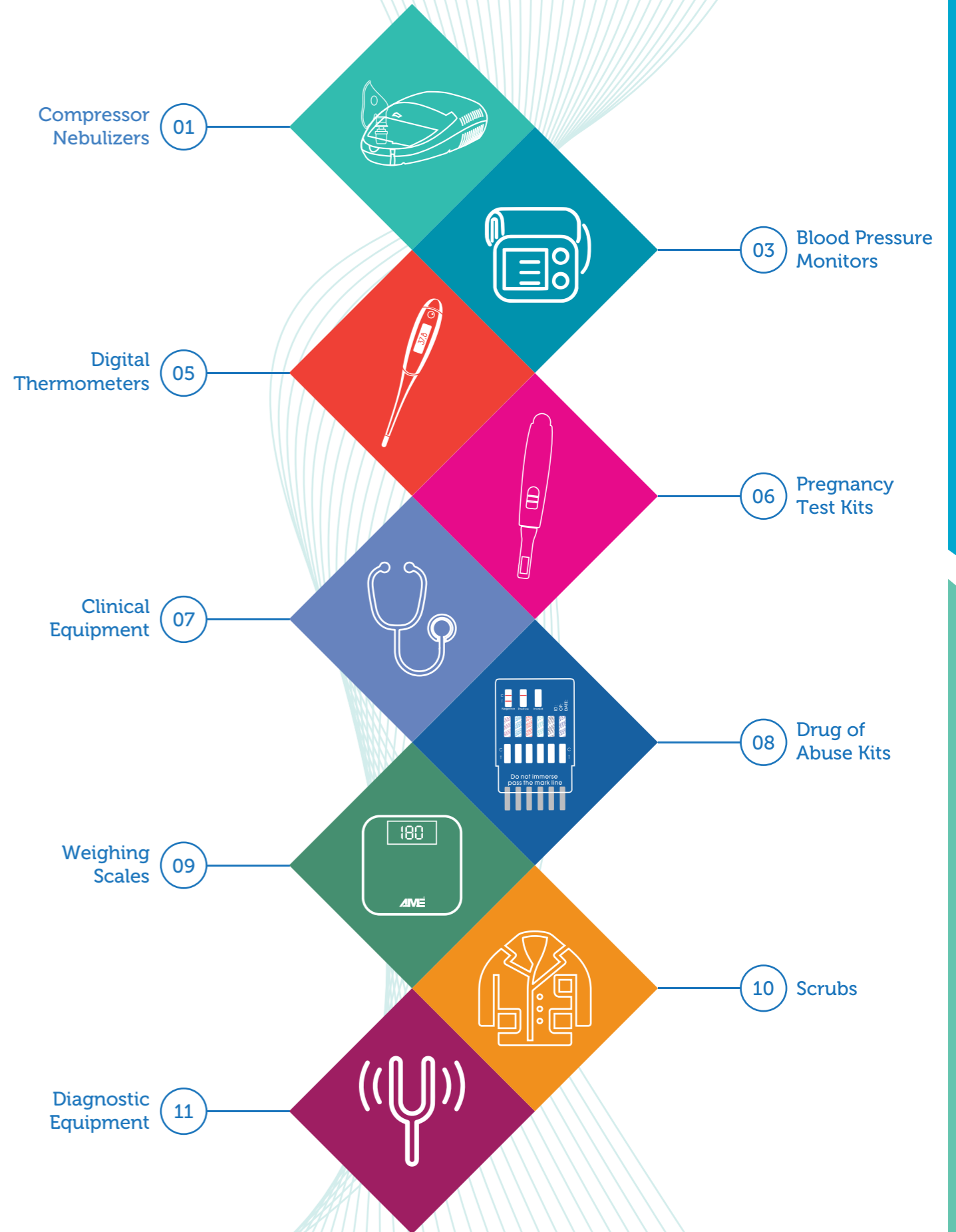
All Products have CE, ISO 13485, FDA and other quality certificates. We also have GMP, Free Sales Certificates and complete product registration dossiers.

## Affordability

Price always matters. We strive to keep the prices affordable for all our customers. AME also provides segmented price points to cater to all patients.



# Index »





# Compressor Nebulizers



## AME COMPRESSOR NEBULIZER MAXNEB CN01WC

- NEBULIZER
- COMPARTMENT TYPE
- MOUTH PIECE
- AIR FILTERS (X 5)
- ADULT MASK
- CHILD MASK
- EASY HOLDING
- STORAGE CORD
- AIR TUBE



## AME COMPRESSOR NEBULIZER MAXNEB II CN02MH

- NEBULIZER
- 2 SPEED
- MOUTH PIECE
- AIR TUBE
- EASY HOLDING
- AIR FILTERS (X 5)
- ADULT MASK
- CHILD MASK
- STORAGE CORD



## AME COMPRESSOR NEBULIZER MAXNEB III JH302

- NEBULIZER
- ADULT MASK
- CHILD MASK
- AIR TUBE
- MOUTH PIECE
- AIR FILTERS (X 5)



## AME Nebulizer Kit



IDEAL FOR ADULTS & PEDIATRIC USE

## AME ULTRASONIC NEBULIZER NB02LA

- MOUTH PIECE
- AIR TUBE
- EASY HOLDING
- 3 SPEED
- STORAGE CORD
- ADULT MASK
- CHILD MASK
- RECHARGEABLE BATTERY INCLUDED





# Blood Pressure Monitors



## AME UPPER ARM BLOOD PRESSURE MONITOR BP 103H

- EXTRA LARGE LCD
- STANDARD ADULT CUFF
- DISPLAYS SYSTOLIC, DIASTOLIC & PULSE RATE
- LOW BATTERY INDICATOR
- ERROR INDICATOR
- WHO INDICATOR
- PREMIUM CARRY CASE
- OSCILLOMETRIC TECHNOLOGY
- AVERAGE OF LAST 3 READINGS
- IRREGULAR HEARTBEAT INDICATOR
- 4X30 MEMORIES WITH DATE AND TIME
- ADAPTER READY (ADAPTOR NOT INCLUDED)



## AME UPPER ARM BLOOD PRESSURE MONITOR BP 1319

- EXTRA LARGE LCD
- STANDARD ADULT CUFF
- DISPLAYS SYSTOLIC, DIASTOLIC & PULSE RATE
- LOW BATTERY INDICATOR
- ERROR INDICATOR
- WHO INDICATOR
- PREMIUM CARRY CASE
- OSCILLOMETRIC TECHNOLOGY
- AVERAGE OF LAST 3 READINGS
- IRREGULAR HEARTBEAT INDICATOR
- 4X30 MEMORIES WITH DATE AND TIME
- ADAPTER READY (ADAPTOR NOT INCLUDED)



## AME UPPER ARM BLOOD PRESSURE MONITOR BP 1359

- EXTRA LARGE LCD
- STANDARD ADULT CUFF
- DISPLAYS SYSTOLIC, DIASTOLIC & PULSE RATE
- LOW BATTERY INDICATOR
- ERROR INDICATOR
- BACKLIGHT
- TALK FUNCTION
- OSCILLOMETRIC TECHNOLOGY
- AVERAGE OF LAST 3 READINGS
- IRREGULAR HEARTBEAT INDICATOR
- 4X30 MEMORIES WITH DATE AND TIME
- ADAPTER READY (ADAPTOR NOT INCLUDED)



## AME WRIST TYPE BLOOD PRESSURE MONITOR BP 2208

- EXTRA LARGE LCD
- STANDARD ADULT CUFF
- DISPLAYS SYSTOLIC, DIASTOLIC & PULSE RATE
- LOW BATTERY INDICATOR
- ERROR INDICATOR
- WHO INDICATOR
- PLASTIC CARRY CASE
- OSCILLOMETRIC TECHNOLOGY
- AVERAGE OF LAST 3 READINGS
- IRREGULAR HEARTBEAT INDICATOR
- 4X30 MEMORIES WITH DATE AND TIME

## AME UPPER ARM BLOOD PRESSURE MONITOR BP 1250

- SMALL LCD
- STANDARD ADULT CUFF
- DISPLAYS SYSTOLIC, DIASTOLIC & PULSE RATE
- LOW BATTERY INDICATOR
- ERROR INDICATOR
- SILICONE FEET FOR STABILITY
- WHO INDICATOR
- OSCILLOMETRIC TECHNOLOGY
- AVERAGE OF LAST 3 READINGS
- ECONOMICAL TYPE
- 120 MEMORIES
- ADAPTER READY (ADAPTOR NOT INCLUDED)



## AME WRIST TYPE BLOOD PRESSURE MONITOR BP 202H

- EXTRA LARGE LCD
- STANDARD ADULT CUFF
- DISPLAYS SYSTOLIC, DIASTOLIC & PULSE RATE
- LOW BATTERY INDICATOR
- ERROR INDICATOR
- WHO INDICATOR
- PLASTIC CARRY CASE
- OSCILLOMETRIC TECHNOLOGY
- AVERAGE OF LAST 3 READINGS
- IRREGULAR HEARTBEAT INDICATOR
- 4X30 MEMORIES WITH DATE AND TIME





# Digital Thermometers



- MT219:** FLEXI-TIP, CENTIGRADE ONLY, 30 SECONDS TECHNOLOGY, FEVER ALARM, LARGE DISPLAY
- MT101:** RIGID - TIP, CENTIGRADE ONLY, 60 SECONDS TECHNOLOGY, FEVER ALARM, LARGE DISPLAY
- MT4119:** RIGID - TIP, CENTIGRADE / FAHRENHEIT CONVERTIBLE, 30 SECONDS TECHNOLOGY, FEVER ALARM, LARGE DISPLAY
- MT118:** RIGID - TIP, CENTIGRADE ONLY, 60 SECONDS TECHNOLOGY, FEVER ALARM, LARGE DISPLAY

## AME Ear Thermometer TS-28



- LARGE DISPLAY
- FEVER ALARM
- CENTIGRADE / FAHRENHEIT CONVERTIBLE
- 9M MEMORIES
- INNER EAR THERMOMETER
- ERROR DISPLAY

## Pulse Oximeters



- %SpO2 & PULSE RATE
- PULSE STRENGTH INDICATION
- LARGE FONT SIZE
- CLINICALLY ACCURATE



# Pregnancy Test Kits



## AME SmartCheck HCG Pregnancy Test Kit

- Cassette type
- Bagged in aluminum jacket
- With product leaflet and outer box
- Pack of 100 boxes in 1 carton

## AME SmartStream HCG Pregnancy Test Kit



- Mid stream type
- Bagged in aluminum jacket
- With Arabic and English leaflet
- Pack of 100 boxes in 1 carton





# Clinical Equipment



## AME 3006

- AME Classic stethoscope

## AME 3002

- AME Diplomat stethoscope (Dual Head)

## AME 1001-3001

- AME Panorama plus mercury sphygmomanometer with stethoscope (Desk Model)

## AME 1002

- AME Panorama grand mercury sphygmomanometer (Desk Model)



## AME 2003

- AME Mobile aneroid sphygmomanometer



## AME 1003

- AME Mobile mercury sphygmomanometer



## AME 1018

- AME Panorama M.F. Sphygmomanometer Mercury Free Desk Model)

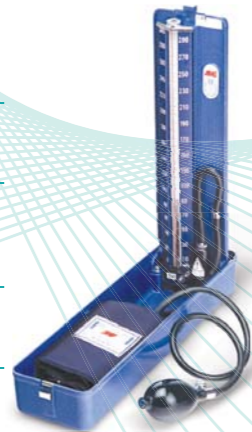


## AME 2001-3001

- AME Delux plus aneroid sphygmomanometer with stethoscope

## AME 2002A

- AME Delux aneroid sphygmomanometer



# Drug of Abuse Kits

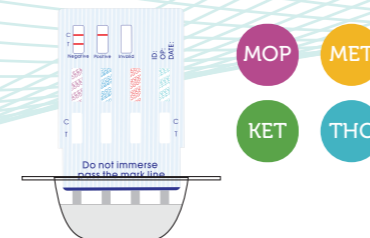


## Alcohol Rapid Test (Saliva)

- EASY TO USE
- QUICK AND ACCURATE
- OVER 99% ACCURACY

## Multi Drug of Abuse Kit (for in-vitro use only)

### 4 in 1 TEST KIT SALIVA TEST



## Multi Drug of Abuse Kit (for in-vitro use only)

### 6 in 1 TEST KIT URINE SAMPLE





# Weighing Scales



## Unique Glass Bathroom Scale AME BS 5241W

- CAPACITY 150 KG/330 LBS
- LCD DISPLAY SIZE: 2.0"
- REPLACEABLE 2 BATTERIES 1.5V AA
- 4 SENSORS WITH HIGH ACCURACY TECHNOLOGY
- KG/LB CONVERTIBLE
- 6 M.M. TOUCHENED GLASS PLATFORM
- ACCURACY  $\pm(1\% + 100\text{ G}/0.2\text{ LB})$
- AUTO ON, AUTO OFF

## Unique Glass Bathroom Scale AME BS 9041

- CAPACITY 180 KG/400 LBS
- LCD DISPLAY SIZE: 2.0"
- REPLACEABLE 2 BATTERIES 1.5V AA
- 4 SENSORS WITH HIGH ACCURACY TECHNOLOGY
- KG/LB CONVERTIBLE
- 6 M.M. TOUCHENED GLASS PLATFORM
- ACCURACY  $\pm(1\% + 100\text{ G}/0.2\text{ LB})$
- AUTO ON, AUTO OFF



# Scrubs

AME Scrub Suits are part of our Hospital Apparel range. Our Scrubs Suits are manufactured in state of the art facility in Okara, Pakistan.

All fabrics used are **OEKO-TEX® STANDARD 100** Certified and provide premium protection, functionality and comfort.

Products are made to order and can be customised as per customer needs.

Please ask about colour and design options.





## AME Dissecting Kit 13-011-00

- Dissecting Forceps
- Teasing needle
- Scalpel handle
- Sharp, angular teasing needle
- Blade No. 22
- Thumb Forceps
- Dissecting Scissors small
- Dissecting Scissors medium
- 10 pieces with pouch

## AME Laryngoscope Fiber Optic 11-035-00

- Metal battery handle
- 4 Fiber optic blades
- Carry case



## AME Laryngoscope Regular 11-035-REG

- Metal battery handle
- Mackintosh 3 blades
- Carry case



## AME Tuning Fork Set 30-123-00

- AME Tuning fork range includes a selection of practically combined tuning forks made of stainless steel or aluminum for comprehensive hearing tests
- Set of 5 pieces



## AME Hammer Buck 11-007-18

- AME Hammers are available from the simple model to the top quality buck hammer.



## AME Otoscope Set (Metal) 11-026-00

- Metal battery handle
- Two extra speculum
- Carry case

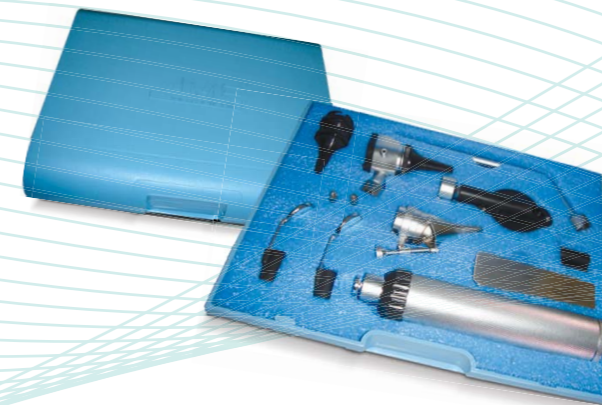
## AME Otoscope Set (Plastic) 11-026-00

- Full plastic body
- Extra speculum in a plastic case
- Carry case



## AME Universal Diagnostic Set 11-025-00

- Metal battery handle
- Metal otoscope
- Metal Ophthalmoscope
- Nasal Speculum, lamp carrier
- 2 Laryngeal mirrors
- Tongue blade holder
- Complete ENT set
- Carry case



## AME Ophthalmoscope Set (Plastic) 11-OPT-0P

- Metal battery handle
- Carry case



## AME Ophthalmoscope Set (Metal) 11-OPT-SS

- Metal battery handle
- Carry case







For a Better Life



North America Distributor:  
**AME WORLDWIDE LLC USA**  
New Jersey, United States of America  
[www.ameworldwide.com](http://www.ameworldwide.com)



Worldwide Distributor:  
**ALMANIA DRUGS STORE**  
P.O. BOX: 31771, Sharjah, United Arab Emirates  
Tel.: +971 6 558 4052, Fax: +971 6 558 4062  
Email: [mtmustfa@eim.ae](mailto:mtmustfa@eim.ae) | [almania1@eim.ae](mailto:almania1@eim.ae)



Solutions for your **Healthcare** needs

[www.ameworldwide.com](http://www.ameworldwide.com) | [www.almaniads.com](http://www.almaniads.com)  
Email: [mtmustfa@eim.ae](mailto:mtmustfa@eim.ae) | [almania1@eim.ae](mailto:almania1@eim.ae)